

SPECIFICATION

IRH

SUBMINIATURE POWER RELAY

CONTACT DATA (ORIGINAL)

Contact arrangement	1A	1C
Contact resistance	100mΩ (at 1A 6VDC)	
Contact material	Siver Alloy(Solid)	
Contact rating (Res. load)	10A 240VAC 12A 120VAC	10A 120VAC 7A 240VAC
Max. switching voltage	250VAC/30VDC	
Max. switching current	15A	
Max. switching power	2770VA/240W	
Mechanical endurance	1 x 10 ⁷ ops	
Electrical endurance	1 x 10 ⁵ ops	

CONTACT DATA (2) (4)

Contact arrangement	1C-(2)	1C-(4)
Contact resistance	100mΩ (at 1A 6VDC)	
Contact material	Siver Alloy(Clad)	Siver Alloy(Clad)
Contact rating (Res. load)	5A 24VDC 5A 240VAC	5A 24VDC 5A 240VAC
Max. switching voltage	250VAC/30VDC	
Max. switching current	10A	
Max. switching power	2770VA/240W	
Mechanical endurance	5 x 10 ⁶ ops	
Electrical endurance	1 x 10 ⁵ ops	5 x 10 ⁴

CONTACT DATA

Insulation resistance	100MΩ (at 500VDC)	
Dielectric strength	Between coil & contacts	1500VAC 1min
	Between open contacts	750VAC 1min
Operate time (at nomi. Volt.)	10ms max.	
Release time (at nomi. Volt)	5ms max.	
Shock resistance	Functional	10G
	Destructive	100G
Vibration resistance	10Hz to 55Hz 1.5mm DA	
Humidity	40% to 85% RH	
Ambient temperature	-40°C to 85°C	
Termination	PCB	
Unit weight	Approx. 10g	
Construction	Wash tight, Flux proofed	

COIL DATA

at 23°C

Nominal Voltage VDC	Pick-up Voltage VDC	Drop-out Voltage VDC	Rated Current (Ma)	Coil Resistance Ω
3	2.25	0.15	120	25 x (1±10%)
5	3.75	0.25	71.4	69 x (1±10%)
6	4.5	0.3	60	100 x (1±10%)
9	6.75	0.45	40	225 x (1±10%)
12	9	0.6	30	400 x (1±10%)
18	13.5	0.9	20	900 x (1±10%)
24	18	1.2	15	1600 x (1±10%)
48	36	2.4	7.5	6400 x (1±10%)

Notes : 1) The data shown above are initial values.

2) Please find coil temperature curve in the characteristic curves below.

ORDERING INFORMATION

Type	IRH	-1C	-D12	S	Nil	Nil	Nil
Contact form	1A : 1 Form A 1C : 1 Form C						
Coil voltage	3, 5, 6, 9, 12, 24, 48 VDC						
Construction	S : Sealed type						
Temperature Range	Nil : UL/TUV85°C F : UL/TUV 105°C						
Insulation System	TBF-1 : Class F Nil : Standard						
Contact material	Nil : Solid Ag alloy (2), (4) : Ag alloy plating						

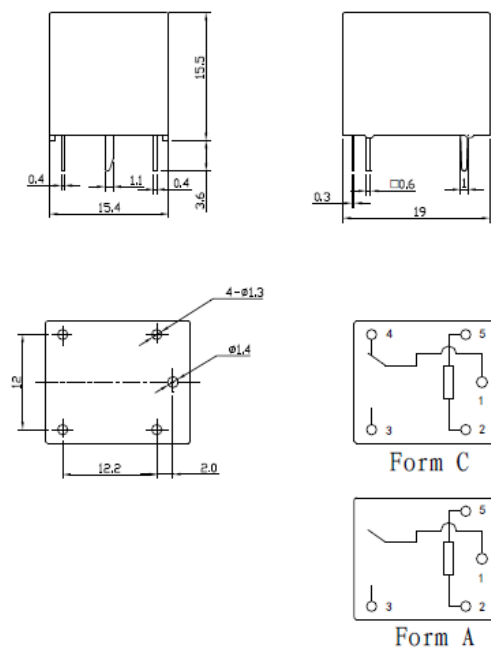
SAFETY APPROVAL RATINGS

UL&CUL	1C(SPDT) : 10A 120VAC 7A 240VAC 1A(SPST) : 12A 120VAC 10A 240VAC	Life-Cycle:6000	MAX 80° F: MAX 40° A: MAX 70°
TUV	1C(SPDT) : 15A 125VAC 7A 240VAC 1A(SPST) : 15A 125VAC 10A 240VAC	Life-Cycle:100000	-40°Cto+70°C F: -40°Cto+105°C

Notes : 1) Only some typical rating are listed above. If more details are required, please contact us.

OUTLINE DIMENSIONS, WIRING DIAGRAM AND PC BOARD LAYOUT

Unit:mm



CHARACTERISTIC CURVES

